

Management system for a safe and healthy working environment

NETHERLANDS EDITION

GOAL, USAGE AND RESULT

presented BRIEF & CLEAR

PEOPLE ALWAYS COME FIRST!

That is why we, together with Operators and 480 Contractor organisations, have been working on the new

HSEQ 'INCENTIVE MODEL'

What does that mean for you and your organisation?
Briefly summarised in GOAL, USAGE and RESULT. >

INFORM

*Willem's
suggestion*

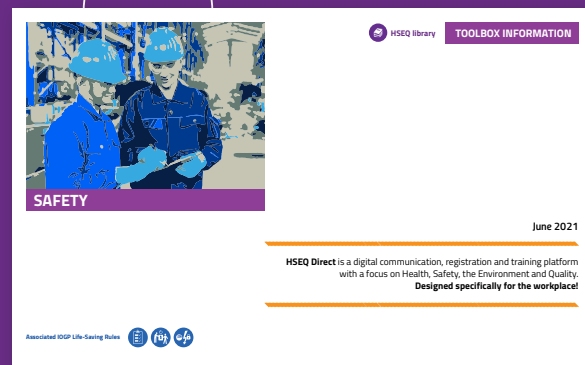
"I've been in the industry for 25 years and I'm happy when I can look up something quickly!" – Willem *

CONCISE AND TO THE POINT

37+ HSE information topics
for daily use

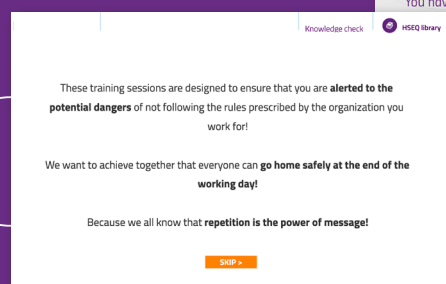
EVERYONE ON THE SAME PAGE

Onscreen presentations
suitable for Toolbox meetings



KNOWLEDGE CHECKED

Interactive quizzes
with results automatically recorded
in our Learning And Registration
System (HSElife LARS).



**TRAINING
REGISTERED**
Digital and printable
certificates
for control and overview



GOAL

To allow companies to
focus on a specific HSE
subject.

USAGE

Daily, for information,
presentations and toolbox
meetings.

RESULT

Increased knowledge,
awareness and alertness
during work.

Key functionalities:

1. **CONCISE AND TO THE POINT** 37+ HSE information topics for daily use.
2. **EVERYONE ON THE SAME PAGE** Onscreen presentations suitable for Toolbox meetings.
3. **KNOWLEDGE CHECKED** Interactive quizzes with results automatically recorded in our Learning And Registration System (HSElife LARS).
4. **TRAINING REGISTERED** Digital and printable certificates for control and overview.

What does that mean for you and your organisation?

Short and concise **37+ HSE information topics for daily use** in a digital format. **Onscreen presentations**, suitable for **Toolbox meetings**, with 5 questions and answers per topic. **Interactive quizzes** consisting of multiple choice questions, with results automatically recorded in our **Learning and Registration System** (HSElife LARS). Also included are **37+ 'out-of-the-box' Action Focus Hazards and Campaigns** ready to use and to raise HSE awareness.

- *Tutorial available*

HSE subjects available in section ITEMS:

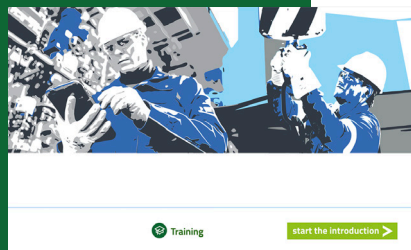
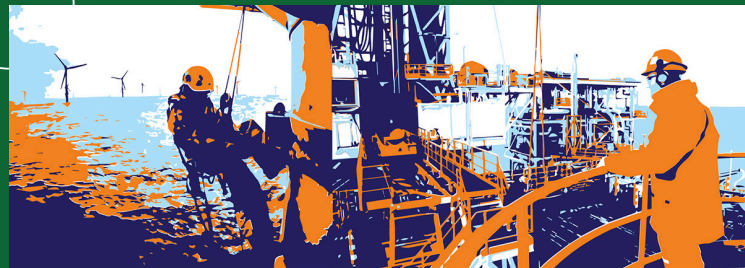
- Asbestos / Ceramic Wool
- Avoiding hand injuries
- Benzene, Caustic Soda
- Chromium-VI
- Dropped Objects
- Dust, smoke and fumes from heavy metals
- Electrical hazards
- Fire fighting
- First Aid
- Flange joints
- General safety at the workplace
- H2S (Hydrogen sulfide)
- Health & Safety signs
- High pressure
- Hoisting and lifting
- Last Minute Risk Analysis
- Mercury
- Methanol
- Natural Gas Condensate
- Nitrogen gas
- NORM/LSA
- Personal Protection Equipment
- Process safety - Safeguarding
- Slips, trips and falls
- Spills
- Taking medicines
- Task Risk Analysis
- Travelling to and from a Plant at Sea by vessel
- Work permits
- Working at height
- Working in confined spaces
- Working in explosive environments

*For reasons of privacy, we have changed the names.

TRAIN

ALWAYS THE RIGHT COMPETENCE

37+ Virtual training modules for the frontline employees in any industry / sector



FULLY COMPATIBLE

with any system you already use:
smartphone, laptop
tablet or desktop

AUTOMATIC REMINDERS

of certificate expiration,
avoiding unpleasant surprises

COMPLETE OVERVIEW

of all training certificates
are available instantly (in LARS)

GOAL

To provide mandatory induction training and refreshers with registration of results and an overview in a Learning and Registration system (LARS).

USAGE

Online interactive training that can be accessed anytime, anywhere and on any device.

RESULT

Cost effective fulfillment of standard HSE training requirements, managed via an easily navigated portal.

Key functionalities:

1. **ALWAYS THE RIGHT COMPETENCE** 37+ Virtual training modules for the frontline employees in any industry / sector.
2. **FULLY COMPATIBLE** with any system you already use smartphone, laptop, tablet or desktop.
3. **AUTOMATIC REMINDERS** of certificate expiration avoiding unpleasant surprises.
4. **COMPLETE OVERVIEW** of all training certificates are available instantly (in LARS).

What does that mean for you and your organisation?

HSElife NL provides **37+ VIRTUAL TRAINING MODULES**, which include **Permit to Work, Task Risk Analysis, Last Minute Risk Analysis, Electrical hazards, Chromium-VI, Confined spaces, Hoisting & lifting, Plant at sea (Offshore), Plant on land (Onshore), Factory introduction, Travelling by vessel, specialized training inductions** for the Energy industry in transition and many other training modules mentioned at the **INFORM** page.

- *Tutorial available*

Frederik's suggestion

"Remote training not only saves time but it is a perfect way to have all our employees well trained and prepared for the work!"

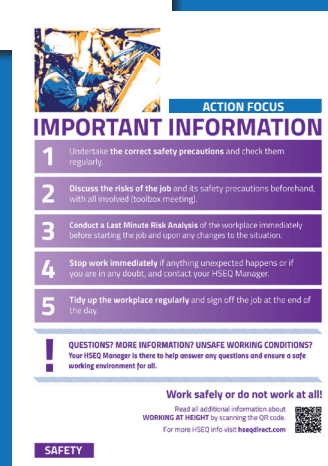
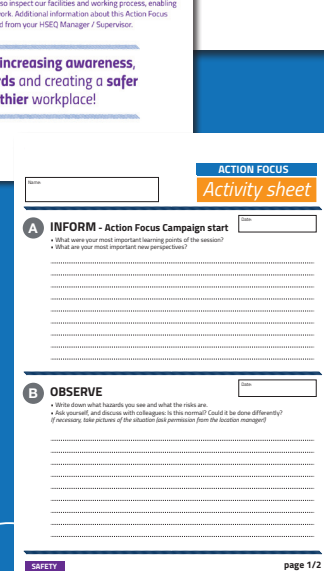
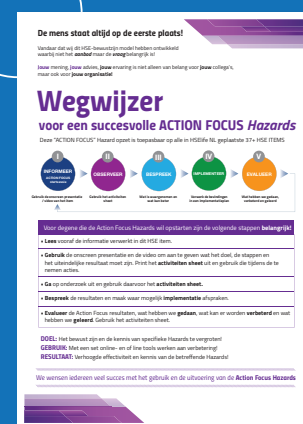
– **Frederick ***

*For reasons of privacy, we have changed the names.

FOCUS

START YOUR OWN
ACTION FOCUS
HAZARD OR ACTION
FOCUS CAMPAIGN,
available with one click

CLEAR
INSTRUCTIONS



IDENTIFY AND
REMOVE HAZARDS
with ready to use tools

EASY-TO-REMEMBER
and quickly deployable

GOAL

to increase awareness
of specific themes or
activities.

USAGE*

Set of online and
offline tools with clear
instructions.

RESULT

Increase effectiveness and
knowledge of the subject.

Key functionalities:

1. **START YOUR OWN ACTION FOCUS HAZARD OR ACTION FOCUS CAMPAIGN**, available with one click.
2. **IDENTIFY AND REMOVE HAZARDS** with ready to use tools.
3. **EASY-TO-REMEMBER** and quickly deployable.
4. **CLEAR INSTRUCTIONS**.

What does that mean for you and your organisation?

HSElife NL offers a set of action tools, ready to use and easy to deploy/apply. Our ACTION FOCUS sets are not only to inform, but especially to observe, discuss, implement and to evaluate.

This is about Your opinion, Your advice, Your experience, which is not only important for Your colleagues, but also for Your Organisation. This makes it possible to make improvements and at the same time increase the involvement.

To get a full overview of applicable topics from ACTION FOCUS Hazards, go to the **INFORM** page. For ACTION FOCUS Campaign go to the **site**, section ACTION FOCUS.

- Easy to use guide and tutorial available

Marcel's
suggestion

"We can now focus on any potential
danger and then remove it easily from
our workplace" - **Marcel** **

*ACTION FOCUS Hazards is applicable to all HSE ITEMS.

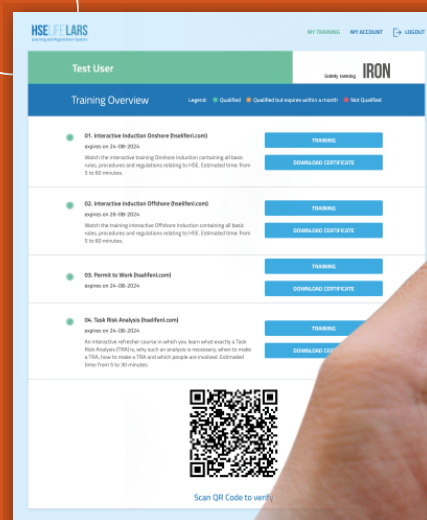
*ACTION FOCUS Campaigns is applicable to all HSE Campaigns.

**For reasons of privacy, we have changed the names.

REGISTER

**COMPLETE
TRAINING
OVERVIEW**
available 24/7

**FOLLOW YOUR
ASSIGNED TRAINING**
on any device, anytime, anywhere
without new investment



**AUTOMATIC
CONNECTION**
with your own CMS
through the use of API

**LOCATION ACCESS
is simplified**
with the use of QR code

GOAL

To provide instant training
and registration with
Company-wide tracking
of training results.

USAGE

Online training
registration, accessible
anytime, anywhere and
on any device.

RESULT

Direct insight
into employee
qualifications.

Key functionalities:

1. **COMPLETE TRAINING OVERVIEW** available 24/7.
2. **FOLLOW YOUR ASSIGNED TRAINING** on any device, anytime, anywhere without new investment.
3. **AUTOMATIC CONNECTION** with your own Competence Management System (CMS) through the use of API.
4. **LOCATION ACCESS** is simplified with the use of QR code.

What does that mean for you and your organisation?

The HSElife **L**earning **A**nd **R**egistration **S**ystem (LARS) is our online training and certification registration system. It can be used on any device (desktop, tablet and mobile) to automatically register employee training certificates and enable companywide supervision and control.

- *Manual available*

*Roland's
suggestion*

“We asked to have the safety ranking of our employees registered in HSElife LARS and to have it forwarded directly to our organization, this turned out to be no problem at all. An absolute added value for us!” – **Roland ***

*For reasons of privacy, we have changed the names.

MAINTAIN

GOAL

To decrease loss of training knowledge.

USAGE

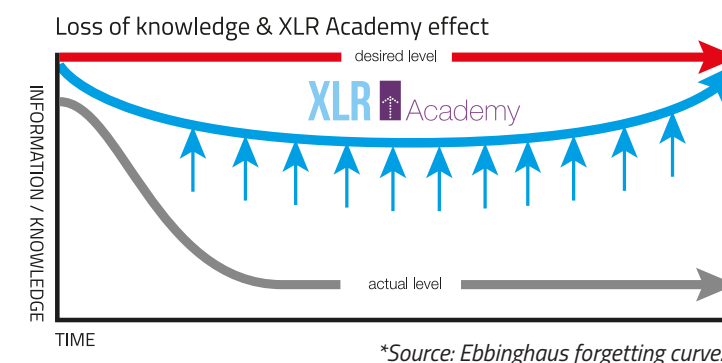
Five self-made or pre-made monthly questions and solutions about HSE issues to incite ongoing engagement.

RESULT

Training knowledge is maintained at the highest level, raising HSE awareness at the workplace.

Key functionalities:

1. **MONTHLY QUESTIONS** self-made or pre-made to start maintaining knowledge directly.
2. **ANALYZE AND IMPROVE** Determine the level of knowledge by creating and analysing clear reports.
3. **SCIENTIFICALLY PROVEN** knowledge maintenance system.*
4. **NO ADDITIONAL INVESTMENT** XLR Academy is fully compatible with any device you already have (desktop, smartphone, tablet, laptop,...).



What does that mean for you and your organisation?

Knowledge acquired during training is often quickly forgotten, if not maintained. **XLR ACADEMY** is a scientifically proven* training support tool that maintains training knowledge where it should be – **at the highest possible level.**

- Easy to use manual and tutorial available

Berry's suggestion

“I regularly experience an ‘of course moment’ when I have to look up the answer to a question, which means that using the XLR Academy is indeed useful.” – **Berry** **

**For reasons of privacy, we have changed the names.

MONTHLY QUESTIONS

self-made or pre-made to start maintaining knowledge directly

ANALYZE AND IMPROVE

Determine the level of knowledge by creating and analysing clear reports

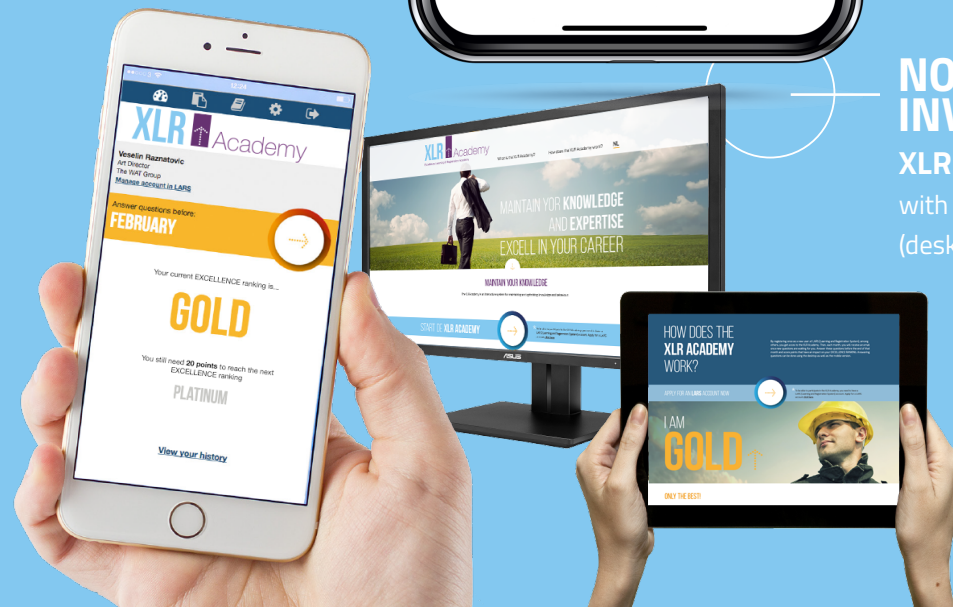
SCIENTIFICALLY PROVEN

knowledge maintenance system*

maintain
your training
knowledge
effortlessly

NO ADDITIONAL INVESTMENT

XLR Academy is fully compatible with any device you already have (desktop, smartphone, tablet, laptop,...)



COMMUNICATE



GOAL

Inform your team directly, make requests, focus on a topic and test knowledge.

USAGE

Team leader sends notifications, informing or asking for a response.

RESULT

Direct, efficient and secure communication throughout the workplace.

Key functionalities:

1. **PURE NOTIFICATION** Inform (specific) colleagues or departments.
2. **SHARING INFORMATION** Send information with url link.
3. **NOTIFICATION WITH RESPONSE** Get input, feedback and idea's from colleagues or departements.
4. **MULTIPLE CHOICE QUESTIONS** To check knowledge on certain subjects.

What does that mean for you and your organisation?

OPSLIFE MESSENGER 2.0 is a **TWO WAY COMMUNICATION SYSTEM** which enables your company to keep your employees **ALERT**, **MOTIVATE** them to participate, **ACTIVATE** them to think and contribute towards achieving the company's goals and to **IMPROVE** their work processes, safety and company culture ... **ON-DEMAND!**

- Easy to use manual and tutorial available

Josephine's suggestion

"OPSLife Messenger is adequately used when it comes to being able to communicate directly with our teams!" – **Josephine ***

*For reasons of privacy, we have changed the names.

Communication

An important part of daily work is communicating, both nationally and internationally. **Intentionally or unintentionally (consciously or unconsciously) you are always trying to convey a certain message to someone else.** This message contains information, which consists of thoughts, feelings and/or behaviour. So actually you are always communicating. The components / tools & services that have been processed / added to HSElife NL are intended to provide insight and thus obtain better results.

tools & services

More information is on the previous pages.



Our vision

Everyone deserves a safe and healthy workplace.

Our mission

It is our mission to deliver a set of essential risk awareness information and training modules to the workforce around the world, and to maintain the acquired knowledge with a sole purpose of reducing workplace related accidents.

HSElife NL is an online all-in-one Health, Safety, Environment and Quality **MANAGEMENT SYSTEM** incorporating interactive learning, certification, communication and registration - **IMPORTANT AND USABLE FOR ANY HIGH-RISK WORK ENVIRONMENT... IN ANY INDUSTRY... EVERYWHERE!**

We support students

We work hard for those working in the industry.
But let's not forget **the future employees**: the students.

We believe that you can never start too soon with raising awareness for safety in the workplace.

HSElife NL, as a platform with a national and international character, supports any student who is following a study that includes Health, Safety, Environment and Quality, and/or who is writing a thesis, to use our documents on hseqdirect.com **for 1 year... completely free!**

Your own HSE information and training?

We understand that every business is different and that some companies have their own specific HSE information and training. We believe that your employees should have an easy access to everything they need - **at one place**.

Our HSElife Management System allows placement of company specific content, in a tailor-made environment. **Interested in company specific solution?** Send us an email on service@hseqdirect.com and we will be more than happy to inform you about all possibilities.

Interested / Become a member?

The costs for using the **HSEQ 'INCENTIVE MODEL'** are:
We start at €15,- per month (ex. VAT and 5% agency fee, billed annually).
This example includes 1 organisation and 10 users of the platform.
For more information send an email to service@hseqdirect.com.
We look forward to receiving your request!